

# PLAY TOGETHER PRAY TOGETHER STAY TOGETHER

## 2019 Annual Report

Double K Retreat & Adventure Center



*You are one body and one spirit, just as God also called you in one hope.*

*There is one Lord, one faith, one baptism, and one God and Father of all who is over all, through all, and in all.*

**-Ephesians 4:4-6**

[www.DoubleK.org](http://www.DoubleK.org)



2019 was quite a year for Double K! A year of change, of development, of major maintenance, and of Grace. Of Bridges to cross, new staff, and awesome groups to serve.

Though all the projects and transitions we tried never to lose sight of what matters. We exist to serve up Christian hospitality to our guests. To create a place set apart where people can get centered. We strive to create an atmosphere where faith and discipleship can grow, and Christian leaders can be inspired and equipped for the service of God's kingdom.

We (Ryan and Marieke) have been blessed to join the Double K family. It's easy to love the place. Even easier to love its people.

We hope you enjoy reading this annual report. Hopefully you'll see the value of Double K projected in our mission and our people served.

Grace and Peace,

*Ryan & Marieke*

Ryan and Marieke Culby

Co-Executive Directors



*For God has not given  
us a spirit of timidity,  
but of power and love  
and disciple*

**-2 Timothy 1:7**





**Our Mission:** To be a  
Christ-centered environment  
serving all people for  
Christian birth, growth, and  
renewal.

## CONTENTS:

- 4-5 2019 By the Numbers
- 6 Projects and Development
- 7 Meet the Board
- 8 Trends Over Time
- 9 2019 Financials
- 10-11 2020 God's Grace
- 12 Back Cover





# 2019 By

**1680** Kids came to camp

**536** People came to Double K with their families

**1350** Adults attended events and retreats

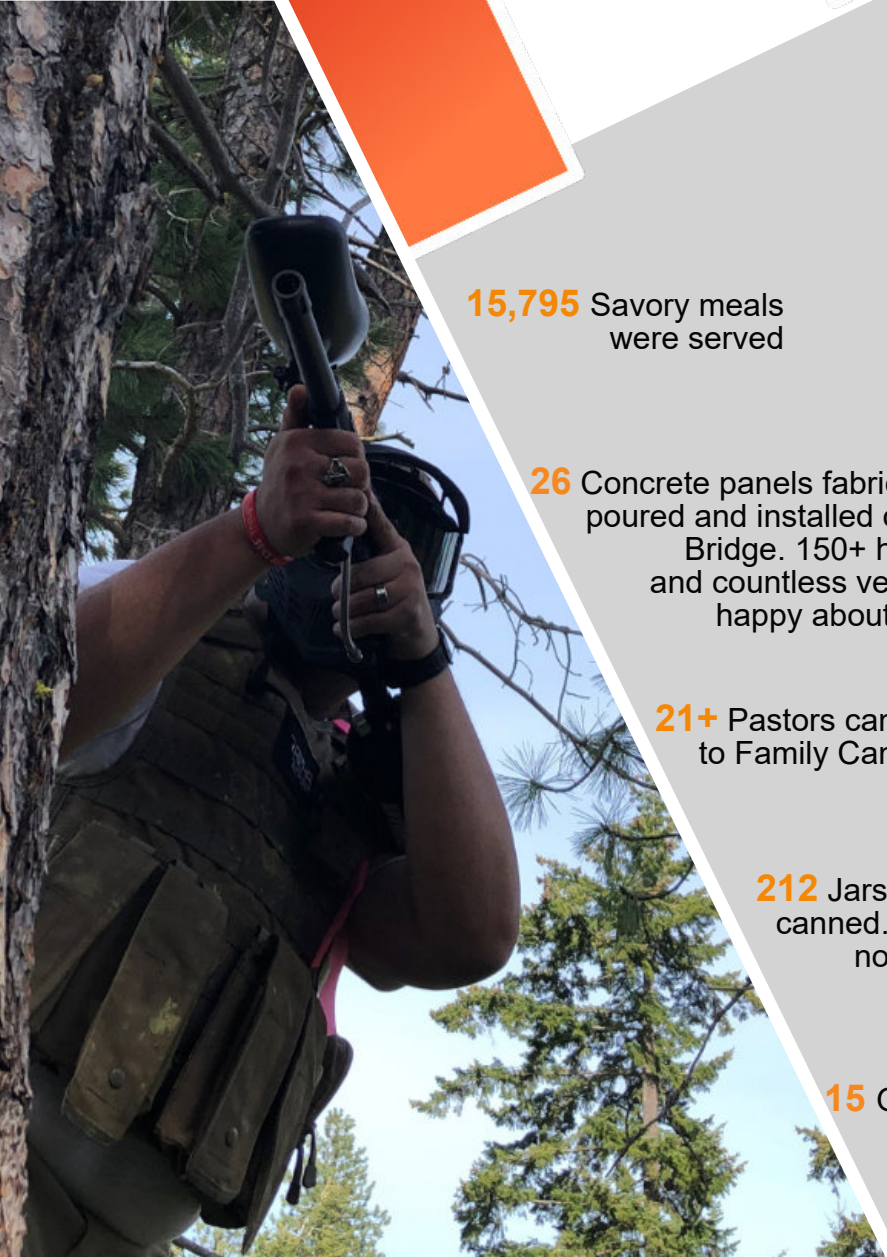
**7902** Nights were slept at DK

**65** Different Church Groups Served

**1606** Cinnamon rolls baked



# The Numbers



**15,795** Savory meals  
were served

**26** Concrete panels fabricated,  
poured and installed on the  
Bridge. 150+ horses  
and countless vehicles  
happy about them

**21+** Pastors came  
to Family Camp

**212** Jars of apple butter  
canned. 3 pennies still  
not accounted for

**15** Groups played on our  
new Paintball course





## We have a lot to celebrate in 2019

We renovated the covered bridge, remove all the rotten wood and replacing it with concrete panels

Our disc golf course is now complete with 18 holes / baskets / ties

Road and parking lot asphalt repairs

Paintball was launched complete with 3 different courses for groups to play

A Gaga pit was installed and enjoyed by most every youth group we've served

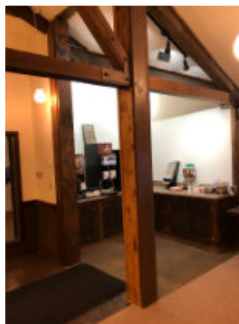
Trail Bridge below the pond was raised to allow all season access across

New wood furnace was installed to heat the dorms

Dining hall and McKee meeting rooms enjoyed much needed renovations

Sound system for groups in the dining hall was installed

Bunkhouse was remodeled



# The Double K Board of Directors

**Dan Tracy - Board Chairman**

cap3d@comcast.net

**Tim Aguilar**

Tim\_aguilar@comcast.net

**Tim Bruner**

newbeginningschapel@yahoo.com

**Tim McCart**

tpmccart@msn.com

**Kelly Taton**

Kelly.taton@gmail.com

**Bev Thrasher**

beeves49@gmail.com

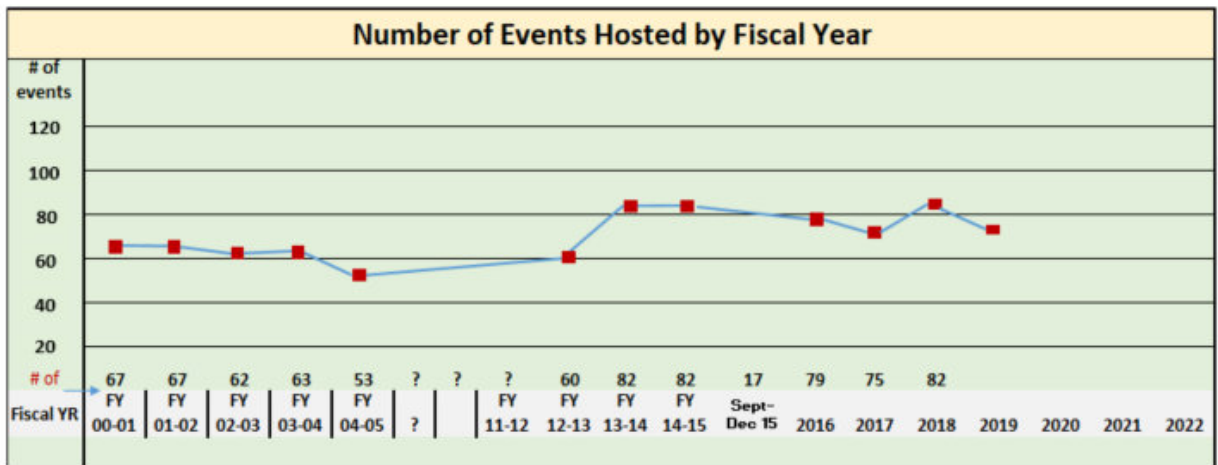
Co-Executive Directors

**Ryan & Marieke Culby**

director@doublek.org

marieke@doublek.org

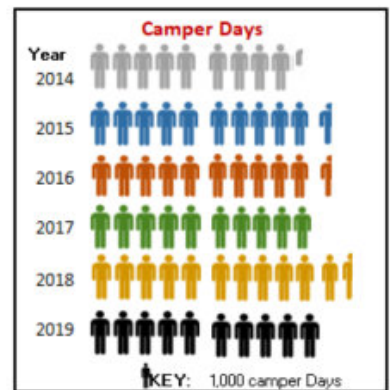
ryan@doublek.org



Revenue		Camper Day Stats				
	using only revenue	year	Camper Days	campers	average \$ @ person	based on CD
2014 Jan-Dec	\$ 346,148	2014	9,200	4509	\$ 76.77	37.62
2015 Jan-Dec	\$ 401,217	2015	10,667	3849	\$ 104.24	37.61
2016 Jan-Dec	\$ 366,300 *	2016	10,507	4241	\$ 86.37	34.86
2017 Jan-Dec	\$ 324,355	2017	10,051	4333	\$ 74.86	32.27
2018 Jan-Dec	\$ 394,707	2018	11,542	4506	\$ 87.60	34.20
2019 Jan-Jan-Dec	\$ 327,774	2019	9,946	3585	\$ 91.43	32.96

\*2016-didn't have Royal Family Kids (N24K with 135 campers for 5 days)

[camper day = one person for one day]



## Introducing User Days

“User days” are a different metric to measure usage. A “User Day” is defined as 1 night and 3 meals. It helps to quantify the value of someone staying multiple days and eating food service vs. someone camping, or just day use.

2018 - 7282 User Days

2019 - 5988 User Days

Fee we charge for 1 night and 3 meals = \$55.50



### Operating Budget

<u>Income</u>	<u>2019</u>	<u>2020</u>	<u>2021</u>
Total Income- Donations	\$ 80,587	\$ 169,000	\$ 45,500
Total Income- Program Revenue	\$ 327,744	\$ 64,700	\$ 262,815
<b>Total Income</b>	<b>\$ 408,331</b>	<b>\$ 233,700</b>	<b>\$ 308,315</b>

### Expense

Total Buildings & Grounds	\$ 95,311	\$ 15,013	\$ 16,205
Total Administration	\$ 45,465	\$ 37,173	\$ 40,949
Total Employee Expenses	\$ 222,173	\$ 74,745	\$ 131,983
Total Kitchen Expenses	\$ 60,769	\$ 17,115	\$ 48,099
Total Marketing	\$ 4,326	\$ 650	\$ 1,149
Total Program Expenses	\$ 24,413	\$ 99	\$ 3,695
Total Utilities	\$ 52,537	\$ 31,463	\$ 39,830
Total Vehicles	\$ 9,318	\$ 7,312	\$ 6,114
Snack Bar	\$ 1,298	\$ -	\$ 1,700
<b>Total Expenses</b>	<b>\$ 515,610</b>	<b>\$ 183,570</b>	<b>\$ 289,724</b>

**Net Income** **\$ (107,279) \$ 50,130 \$ 18,591**

*\*Why the large negative in 2019? 2019 was a big year for improvements and catch up.  
Major bridge renovation, paintball program, water rights, and overlapping directors  
Some of this funding for 2019 projects was counted as income in the prior year*

### DK Investments

	Rate	Balance
Seattle Bank	2.80	\$ 20,279
Seattle Bank	2.45	\$ 16,098
Seattle Bank	2.45	\$ 15,000
Morgan Stanley	2.65	\$ 15,044
Wells Fargo	2.80	\$ 15,104
<b>Sub-Total</b>		<b>\$ 81,525</b>
Checking 12/31/19		\$ 16,876
Savings 12/31/19		\$ 13,915
<b>Sub-Total</b>		<b>\$ 30,791</b>
<b>Total</b>		<b>\$112,316</b>

### Designated Donations

Skaggs-Gossen	\$ 76,329
Playground	\$ 2,049
Bath House	\$ 1,910
Wood's Memorial	\$ 1,795
RV Loop	\$ 10,250
Ashpalt repair	\$ 3,780
<b>Total</b>	<b>\$ 96,113</b>

# 2020 GOD'S GRACE

## PNA's Youth Winter Camp

February 28<sup>th</sup> - March 1<sup>st</sup>, 2020

This was our last big event before the Covid19 wall fell down around us. Over 100 attended!



## How is Double K Surviving?

### Double K:

- Cut costs and overhead
- Overwhelming individual financial support
- Generous church financial support
- Graced with significant gift from Evergreen Community Church of God (\$105 K)
- Received \$33 K of SBA funds
- Steps of DK - Walk / Run / Bike fundraiser
- Modified Family Camp to a Family Campout *(we couldn't offer formal large group programming)*
- Campsite Revenue
- Opened Disc Golf Course to public *(with donation box)*
- Sought programs to support the community
- Hosted and served firefighters

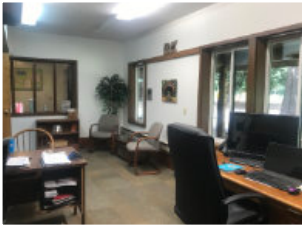


During the fires we had two helicopters "dipping" water from our pond!



# THROUGH COVID

## Good Things Even in Bad Times



Office Renovations



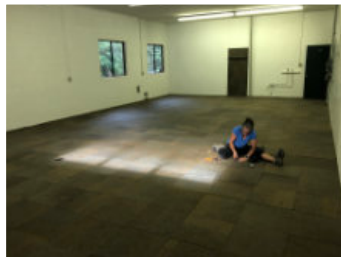
Irrigation system  
brought back to life



New Campfire circle from  
the old bridge boards



New dish washer  
and hood vent



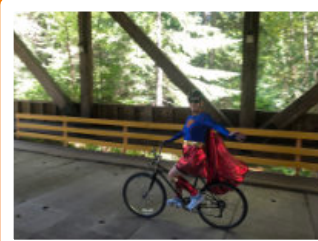
Skaggs Gossen  
renovations



New Entrance Sign



Lots of repair and  
maintenance



Heroes Spotted at DK



When forest fires were next to  
DK- we served the firefighters

*We ask the Lord's blessing on camps for 2021*



**Double K Retreat &  
Adventure Center**



620 Tall Timber Trail

PO Box 98

Easton, WA 98925

(509)656-2304

[director@doublek.org](mailto:director@doublek.org)

[www.DoubleK.org](http://www.DoubleK.org)

*I lift my eyes to the mountains -  
where does my help come from?*

*My help comes from the Lord  
the Maker of heaven and earth  
-Psalm 121:1-2*

